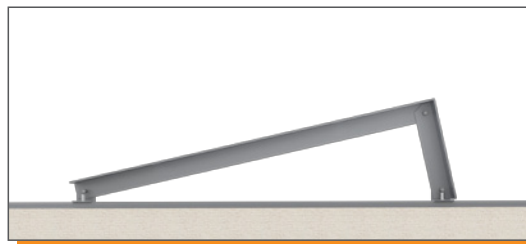


BISOL EasyMount ALU Triangular


Versatile and resistant solution for flat roofs





BISOL EasyMount ALU Triangular mounting system is suitable for PV installations on roofs with larger spans of the roof bearing structure, or roofs requiring higher wind and snow load resistance. The structure is available in several different incline angles and can be simply laid out without drilling into the roof. For pitched roofs, or if extra stability required, the ALU Triangular structure is mounted into the roof structure using hanger bolts. The pre-assembled bolt connections on the A-frame reduce the on-site installation time.





| Technical Specifications | Solution with EasyMount ALU Rail 80 | Solution with EasyMount Profile 80 and Hanger bolts |
|-------------------------------|--|--|
| Application | Flat roofs covered with bitumen, gravel or synthetic membrane | Flat roofs covered with bitumen, gravel or synthetic membrane / Pitched roofs with trapezoidal or corrugated metal sheet |
| Roof incline | Up to 5° | Any roof inclination |
| Method of installation | Laying without roof penetration | Fixing with hanger bolts into the roof structure |
| Module incline | 12.5°, 20° and 30° (other angles available upon request) | |
| Module orientation | Landscape (portrait upon request) | |
| Module frame tolerances | Suitable for most framed module dimensions / Frame thickness: 35, 40 or 45 mm (1.38", 1.57" or 1.77") applicable to different clamp types | |
| Material | Aluminum EN-AW 6060 T5 (L-profile, ALU Rail 80, Profiles 50 and 80) / Stainless steel A2-70 (fastening elements) | |
| System weight without ballast | 0.02 kN/m ² (without PV module) | 0.035 kN/m ² (without PV module) |
| Snow load per system | 0 – 2.40 kN/m ² (with BISOL PV modules) | |
| Wind load (velocity) | 0 – 110 km/h (68 mph) / Wind zones 1, 2, 3 | |
| Additional stabilization | Ballast (concrete slabs) / Windshields | Windshields |

 10-year durability guarantee

 With or without roof penetration

 Lightweight layout option

 Various incline angles

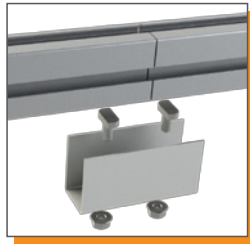
 Resistant to heavy loads

 Suitable for high wind zones

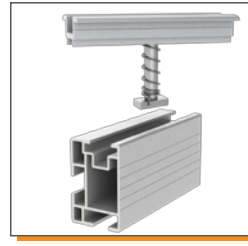
System Components



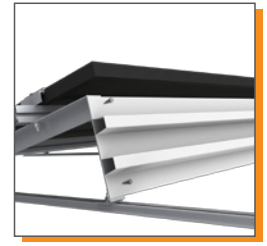
Profiles 50 are mounted on L-profiles.



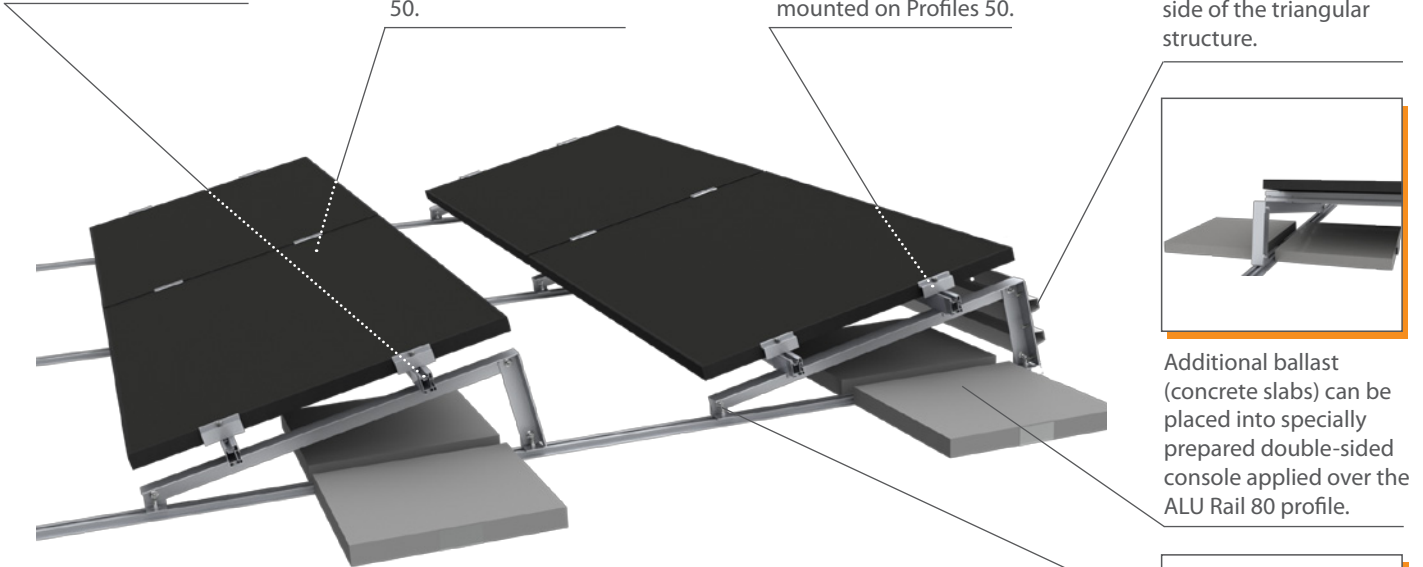
U-connectors allow for the extension of Profiles 50.



Pre-assembled end and middle clamps are mounted on Profiles 50.



Metal windshield can be attached on the reverse side of the triangular structure.

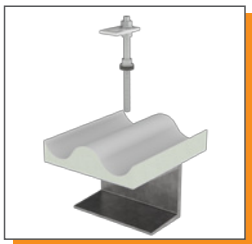


Additional ballast (concrete slabs) can be placed into specially prepared double-sided console applied over the ALU Rail 80 profile.



The A-frame is mounted on ALU Rail 80 using two connecting elements.

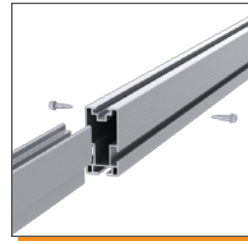
Components required for mounting using hanger bolts



The hanger bolt is screwed through the roof decking into the roof structure. The EPDM washer ensures a watertight connection.



Profiles 80 are mounted on hanger bolts.



Connector 80 allows the extension of Profile 80 by inserting into connecting profiles and fixing.



The A-frame is mounted on Profile 80 using two connecting elements.

| Maximum distance between supporting points for BISOL EM Profile 80 | | | | | | | |
|--|----------------|-----------------|----------------|----------------|-----------------|-----------------|-----------------|
| Max load per profile (kN/m') | 8.1 | 5.2 | 3.0 | 2.2 | 1.5 | 1.1 | 0.8 |
| Span (c) | 1.00 m (3' 3") | 1.50 m (4' 11") | 2.00 m (6' 7") | 2.50 m (8' 2") | 3.00 m (9' 10") | 3.50 m (11' 6") | 4.00 m (13' 2") |

| Module angle (°) | Distance from point A to point B |
|------------------|----------------------------------|
| 12.5° | 150 cm (4' 11") |
| 20° | 170 cm (5' 7") |
| 30° | 230 cm (7' 7") |

| Maximum distance between supporting points for BISOL EM Profile 50 | | | | | | | |
|--|----------------|-----------------|----------------|----------------|-----------------|-----------------|-----------------|
| Max load per profile (kN/m') | 2.5 | 2.2 | 1.2 | 0.8 | 0.5 | 0.4 | 0.3 |
| Span (d) | 1.00 m (3' 3") | 1.50 m (4' 11") | 2.00 m (6' 7") | 2.50 m (8' 2") | 3.00 m (9' 10") | 3.50 m (11' 6") | 4.00 m (13' 2") |

