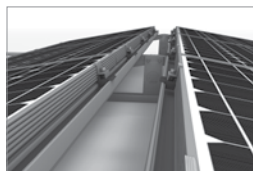
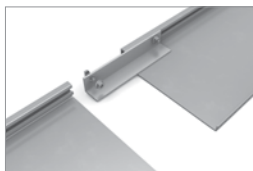
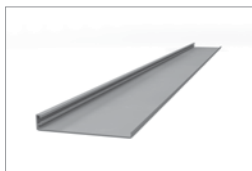


Mounting systems for solar technology



K2 SYSTEMS
FLAT ROOF SYSTEMS
D-LEVEL SYSTEM

D-LEVEL SYSTEM

- Roof mounted system for double-sided configuration
- For roofs with low ballast potential
- Optimal roof layouts, no shading issues
- With the K2 LevelRail
- Slight, two-sided 10° elevation
- High flexibility
- Reduced assembly time due to pre-mounted components
- Very attractive price-performance ratio
- Tested in a wind tunnel by leading structure aerodynamicists



Technical data

Field of application	Flat roof
Roofing	Membrane and bitumen roof
PV modules	suitable for all standard framed module types
Module orientation	Horizontal
System orientation	Flexible double-sided any orientation possible
Material	Aluminium (EN AW-6063 T66)
Connecting elements	Stainless steel A2-70
Weight/m ² module surface	Without module, without ballast approx. 3.5 kg
Roof connection	Overlay with potential ballast; no roof penetration
Static principles	Calculation principles in accordance with Eurocode 9 - dimensioning and construction of aluminium structures using wind tunnel tests
Load assumption in accordance with	DIN 1055 / Eurocode 1
System components	K2 LevelRail, K2 SolidRail Light, D-Level Set, End Clamp, AddOn, M K2



System Explosion drawing



Frankental | Germany
System: 58 kW | D-Level System



Hamburg | Germany
System: 70 kW | D-Level System

SERVICE-HOTLINE
+49 (0)7152 3560-0
www.k2-systems.com

Produktblatt D-Level System | GB2 | 1012 | Subject to change
Product illustrations are exemplary illustrations and may differ from the original.

